

TOK-G DIAL INDICATOR TORQUE WRENCHES

Easy to read dial indicator. Well suited for inspection and general maintenance service.



TOK-G (with peak indicator)

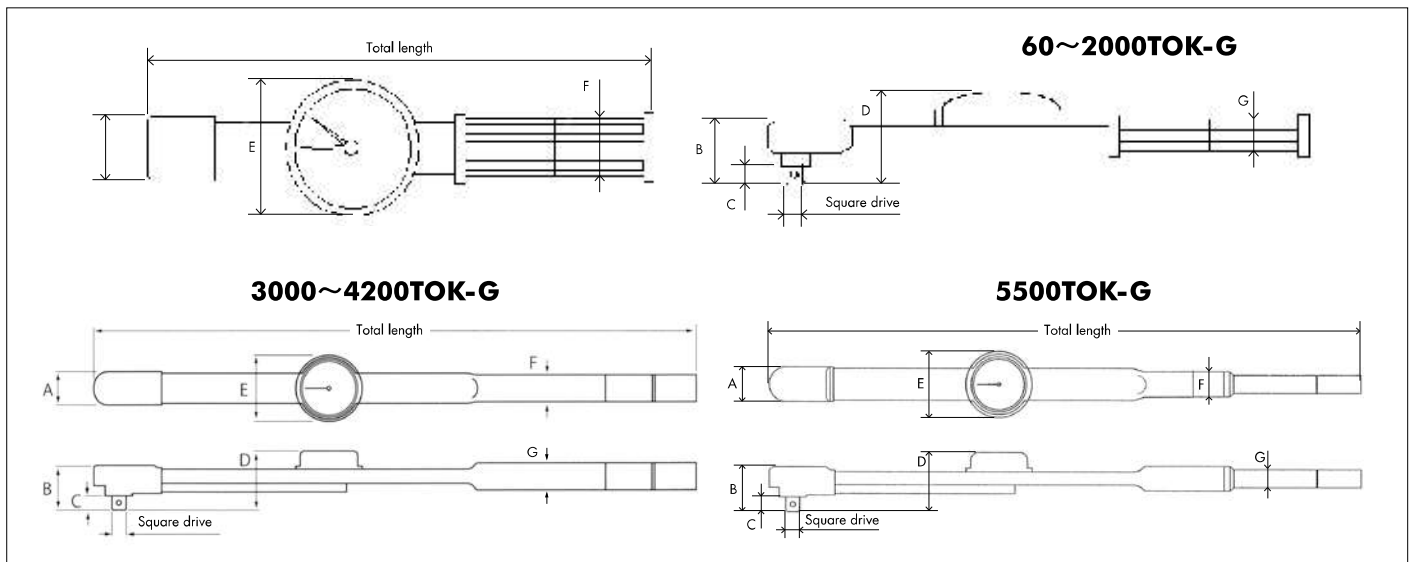


FEATURES

- Oval design with comfort rubber grip reduces strain.
- Easily readable for inspections.
- Useful for general tightening work.
- Accuracy : $\pm 3\%$ of indicated value over the full range

USING A TOK WRENCH

- (1) Turn the dial cap and set the indicator to 0.
 - (2) Mount a socket on the square drive.
 - (3) Tighten until the indicator points to the desired torque.
- * When using a peak indicator wrench, set it to 0 before tightening.



Model (kgf·cm/kgf·m)	Range (CW/CCW)	Increment	Model (N·m)	Range (CW/CCW)	Increment	Square drive	Total length	Dimensions (mm)							Weight kg
								Head			Body				
	kgf·cm/kgf·m			N·m		mm	mm	A	B	C	D	E	F	G	
60TOK-G	6~60	1 kgf·cm	N 6TOK-G	0.6~6	0.1	6.35 (1/4")	260	35	38.5	7.5	58	90	37	21.5	0.5
120TOK-G	10~120	2	N 12TOK-G	1~12	0.2										
300TOK-G	50~300	5	N 30TOK-G	5~30	0.5	9.53 (3/8")	323	35	43	11	60	90	37	21.5	0.61
500TOK-G	50~500	5	N 50TOK-G	5~50	0.5										
700TOK-G	100~700	10	N 70TOK-G	10~70	1	12.7 (1/2")	463	39	49	14	65	90	41	22.5	0.87
1400TOK-G	200~1,400	20	N 140TOK-G	20~140	2										
2000TOK-G	200~2,000	20	N 200TOK-G	20~200	2	19.05 (3/4")	682	41	55	20	77	90	φ30	1.6	
3000TOK-G	3~30	0.5 kgf·m	N 300TOK-G	30~300	5										
4200TOK-G	4~42	1	N 420TOK-G	40~420	10	955	48	50	60	80	80	90	φ34	2.5	
5500TOK-G	5~55	1	N 550TOK-G	50~550	10	1,110	50						φ38	φ30	3.8