

RSPK PRE-SET, RING TORQUE WRENCHES

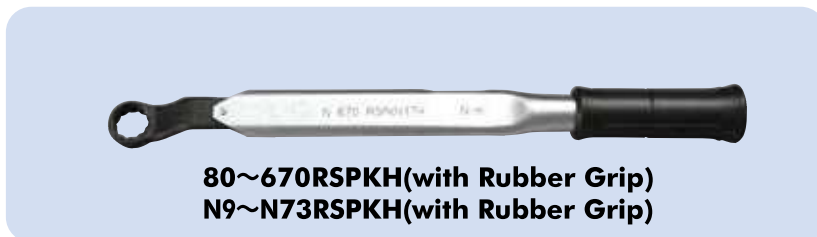
Can be used for accurate torque application even on joints inaccessible with other wrenches.

FEATURES

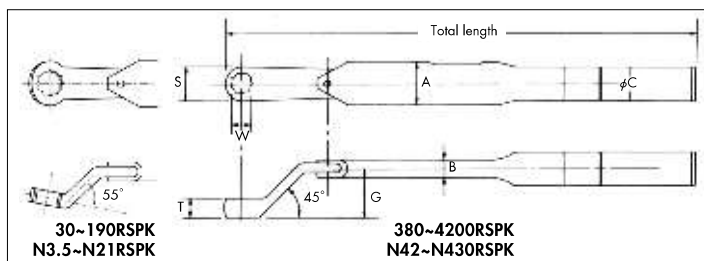
- The ring head of RSPK wrenches is offset at a 45° angle making certain joints particularly accessible.
- A single function wrench, used for a single setting combination of fastener size and torque setting.
- Most suited for tightening multiple same-size fasteners at the same torque on a production line.
- Setting confirmation unnecessary.
- Accuracy : ±3% of pre-set value

EXAMPLE OF ORDER

Model Size(W) Pre-set Value
 | | |
 N21RSPK 10 × 14N·m



Model	Ring head sizes (W)			Dimensions Head			Model	Ring head sizes (W)			Dimensions Head			Model	Ring head sizes (W)			Dimensions Head																							
	mm	S	T	mm	S	T		mm	S	T	mm	S	T		mm	S	T																								
30RSPK N3.5RSPK	5.5		4	6	10	5	80RSPK N9RSPK	5.5		4	6	10	5	190RSPK N21RSPK	10	16	7	6	10	5	11	18	7	12	19	8	13	20	8.5	14	22	9	17	26	10	19	29	10.5	22	33	12
	6							7							8	13	6	9	14		10	16	7																		
	7							8	13	6					9	14		10	16	7																					
	8	13	6					9	14						10	16	7																								
	9	14						10	16	7																															
10	16	7																																							



Model (kgf·cm)	Range kgf·cm	Old Model (N·m)	New Model (N·m)	Range N·m	Ring head sizes (W)				Total length mm	Dimensions (mm)					Weight kg		
					mm					Head							
										S	T	G	A	B		C	
30RSPK	5~35	N30RSPK	N3.5RSPK	0.5~3.5	5.5	6			175	★ 1		19.5	7.5	15	0.12		
80RSPK	20~90	N80RSPK	N9RSPK	2~9	5.5	6	9	10	197	★ 2	10	25	26.6	8.2	20	0.13	
					8	9	10										
					11	12											
190RSPK	40~210	N190RSPK	N21RSPK	4~21	10				222	★ 3	10	25	26.6	8.2	20	0.21	
					11	12	13	14								225	0.21
					17	19	22									228	0.23
					11	12	13	14								268	0.31
380RSPK	90~420	N380RSPK	N42RSPK	9~42	17	19	22		273	★ 3	10	25	26.6	8.2	20	0.39	
					14	17										343	0.46
					19	22	24									348	0.48
670RSPK	140~730	N670RSPK	N73RSPK	14~73	27	30	32		353	★ 3	10	25	26.6	8.2	20	0.5	
					14											413	0.7
					17											413	0.7
					19	22										415	0.8
					24											415	0.85
1200RSPK	250~1,270	N1200RSPK	N127RSPK	25~127	27	30	32		428	★ 3	12	29	32.8	11.3	25	0.9	
					36											437	0.9
					27	30	32									428	0.9
					36											437	0.9
					19	22	24									470	1.0
1600RSPK	320~1,700	N1600RSPK	N170RSPK	32~170	27	30	32		474	★ 3	15	31	32.8	11.3	25	1.2	
					19											605	1.2
					22	24	27									608	1.25
					30	32										610	1.3
					36											612	1.35
2200RSPK	480~2,300	N2200RSPK	N230RSPK	48~230	41				612	★ 3	16.5	33	35.6	12.5	27.2	1.4	
					22											682	1.4
					24	27	30									685	1.45
					32	36										688	1.45
					41											688	1.5
3100RSPK	680~3,200	N3100RSPK	N320RSPK	68~320	27	30	32		880	★ 3	18	35	38	16	30	1.55	
					36											885	1.55
					41											890	1.6
					46											895	1.65
4200RSPK	950~4,300	N4200RSPK	N430RSPK	95~430	46				895	★ 3	18	37	43.3	17.8	34	1.7	

* is the new model that is applied from 1st January, 2016.